



MONTHLY MEMBERSHIP PROGRESS REPORT

District 204

Results as of: 11/30/2017

GMT: EK PHANG BOBBY ENG

LOCATION GUAM

GMT CA

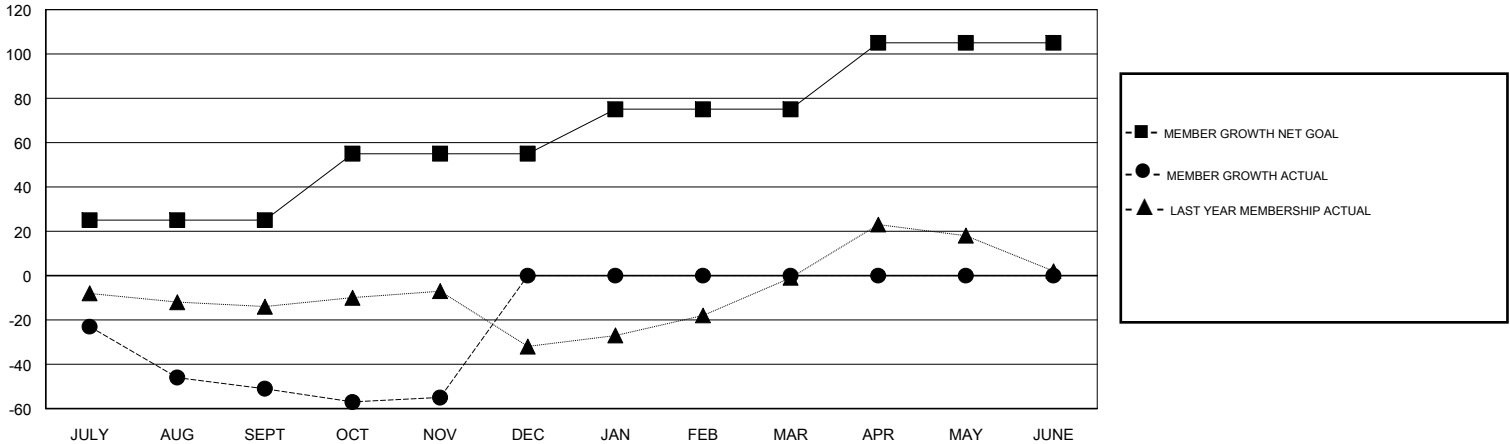
| Clubs | | | |
|-----------------------|---------------|-----------|---------------|
| RESULTS FOR 2017-2018 | | | |
| QUARTER | NEW CLUB GOAL | NEW CLUBS | DROPPED CLUBS |
| JULY/AUG/SEPT | 1 | 0 | 0 |
| OCT/NOV/DEC | 1 | 0 | 0 |
| JAN/FEB/MAR | 1 | 0 | 0 |
| APR/MAY/JUNE | 1 | 0 | 0 |

| Members | | | |
|-----------------------|------------------------|----------------------|--|
| RESULTS FOR 2017-2018 | | | |
| QUARTER | MEMBER GROWTH NET GOAL | MEMBER GROWTH ACTUAL | DROPPED MEMBERS ACTUAL (including transfers) |
| JULY/AUG/SEPT | 25 | 23 | 74 |
| OCT/NOV/DEC | 30 | 15 | 19 |
| JAN/FEB/MAR | 20 | 0 | 0 |
| APR/MAY/JUNE | 30 | 0 | 0 |

GOALS AND ACTUAL NEW CLUBS CUMULATIVE



GOALS AND ACTUAL MEMBERS CUMULATIVE



| |
|------------------|
| DROPPED CLUBS: 0 |
|------------------|

11 CLUBS OF 21 ADDED 1 OR MORE NEW MEMBERS

| GENDER DISTRIBUTION | |
|--|--------------|
| MALE | 305 (44.40%) |
| FEMALE | 382 (55.60%) |
| Women Percentage Fiscal Year Goal: 60% | |

| DROPPED MEMBERS | |
|-----------------|-----------|
| DECEASED | 2 |
| CLUB CANCELLED | 0 |
| OTHER | 91 |
| TOTAL | 93 |

[CLICK HERE FOR CUMULATIVE MEMBERSHIP DATA](#)

| | |
|---------------------------------|-----|
| TOTAL FAMILY UNIT MEMBERS | 101 |
| FAMILY MEMBERS PAYING HALF DUES | 53 |